



Vergennes Planning and Environment Linkages Study

Technical Committee and
Agency Partners

June 12, 2024



Agenda

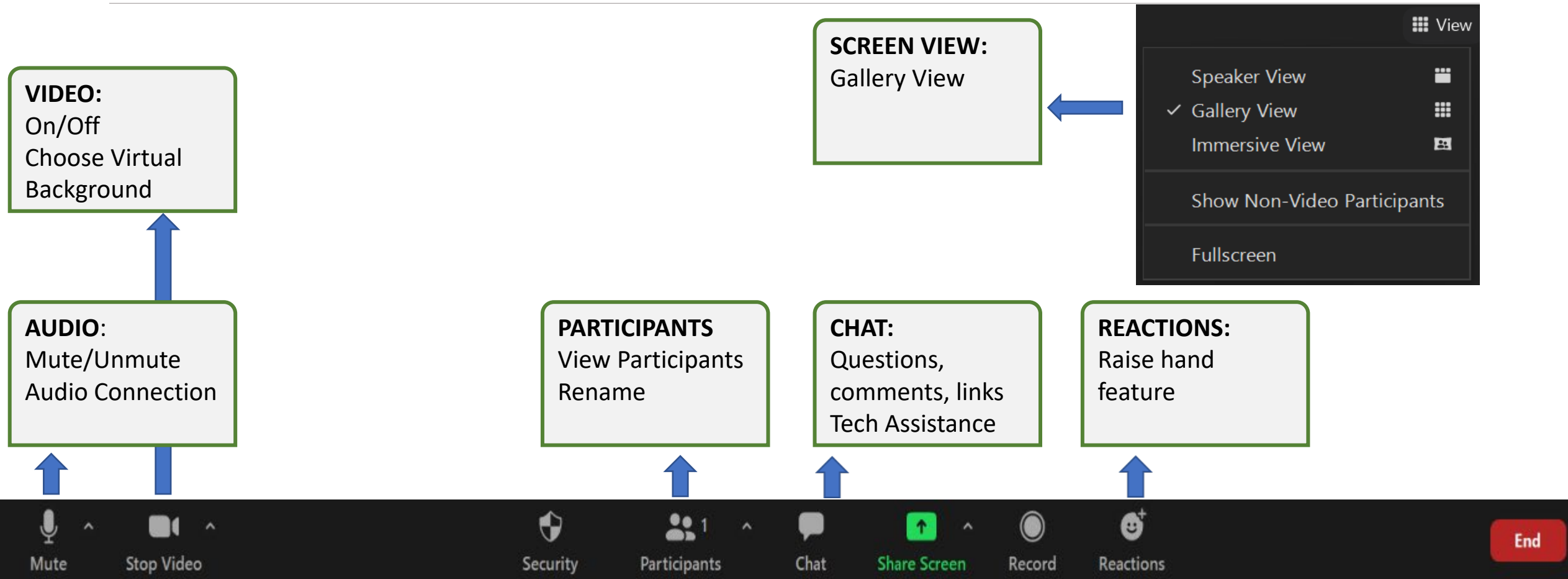
1. Call to Order and Roll Call
2. PEL Study Background
3. Concept Screening
4. Land Use Visioning
5. Committee Consensus Point
6. Evaluation Criteria and Metrics
7. Next Steps

V E R G E N N E S

Planning & Environment Linkages (PEL) Study



Zoom Orientation



Roll Call – Technical Committee

VOTING members

- **Chair:** Matthew Arancio, Transportation Planning (VTrans)
- John Bull, Municipal Public Works (Town of Ferrisburgh)
- Alysha Kane, District Maintenance (VTrans)
- Shannon Haggett, Land Use (City of Vergennes)
- Fred Kenney, Economic (Addison County Economic Development)
- Jim Larrow, Municipal Public Works (City of Vergennes)
- Bruce Martin, Roadway Design (VTrans)
- Joel Perrigo, Municipal Assistance (VTrans)
- Katie Raycroft-Meyer, Land Use Planning (ACRPC)
- Jeff Ramsey, Environmental (VTrans)
- Mike Winslow, Transportation Planning (ACRPC)

NON-VOTING members

- Jacqueline DeMent, Planning (FHWA)
- Chris Jolly, Planning (FHWA)
- James LaCroix, Structures (VTrans)
- Adam Lougee, Planning (ACRPC)
- Elizabeth Shipley, Environmental (FHWA)
- Amanda Holland, Bike-Ped (VTrans)

Note - Technical committee members were invited for specialism listed.
In contrast, Policy committee members invited according to jurisdiction (e.g., town) or specialism



Roll Call – Agency Partners

Federal Agencies

- Federal Highway Administration (FHWA), Christopher Jolly and Elizabeth Shipley
- U.S. Army Corps of Engineers (USACE), Michael Adams
- U.S. Coast Guard (USCG), Gary Croot
- U.S. Environmental Protection Agency (EPA), Beth Alafat and Tim Timmermann
- U.S.D.A. - Natural Resource Conservation Service, Obediah Racicot
- Federal Emergency Management Agency (FEMA), David Robbins and Eric Kuns
- [U.S. Fish and Wildlife Service, Susi von Oettingen]

State Agencies

- Agency of Natural Resources (ANR), Billy Coster
- Agency of Commerce and Community Development (ACCD), Vermont Division for Historic Preservation, Laura Trieschmann
- Agency of Commerce and Community Development (ACCD), Department of Housing and Community Development, Chris Cochran and Amy Tomasso
- Agency of Agriculture, Food, and Markets, Ari Rockland-Miller and Ryan Patch
- Buildings and General Services (BGS), Vermont Agency of Administration, Eric Pembroke



PEL Study Background



Why are we doing a PEL study in Vergennes?

- Previous studies indicated regional agreement that truck volume in downtown Vergennes should be addressed.
- PEL study allow us to go:
 - Wider in our outreach and engagement
 - Deeper into details, including conceptual design and land use visioning

Goal is for region to come to *consensus* on path forward

- VTrans and ACRPC role in PEL study is to facilitate regional process



Summer 2021 – Spring 2022

Task 1: Project Kick-Off and Scope Refinement

Task 2: Purpose and Need Statement



Spring 2022 – Spring 2023

Task 3: Alternatives Development and Concept Screening



2023 - 2024

Task 4: Alternatives/Concept Refinement

Task 5: Integrated Transportation & Land Use Alternatives

Task 6: Alternatives Evaluation & Recommendations



2024 - 2025

Task 7: Implementation Plan

Task 8: PEL Report

Where are we in the overall timeline?

PEL Study (2021-2025)

Completed Tasks

- Define what we are working towards - *Purpose and Need Statement*
- Narrow down full list of concepts



Current & Upcoming Tasks

- Land use visioning
- Conceptual design
- Concept Evaluation
- Implementation Plan
- Finalize report



Future steps if the study concludes construction is needed:

Obtain Funding

- *Timeline: Unknown*



Design & Engineering

- *Timeline: 7-13 years*
- Conceptual, Draft and Final Design
- Environmental Studies & NEPA
- Permitting
- Right-of-Way Acquisitions



Construction

- *Timeline: 2-4 years*

NOTE: The study may conclude that construction is not needed.

Technical Committee and Agency Roles



Technical Committee

Role

Guide, review, and validate the consultant's methods, analyses, findings, and recommendations on which the Policy Committee will make its decisions

Members

Subject matter experts from VTrans, region, and municipalities



Agency Coordination

Role

Guide coordination activities through the duration of the study with interested, involved agencies that may be likely cooperating and participating agencies under NEPA

Members

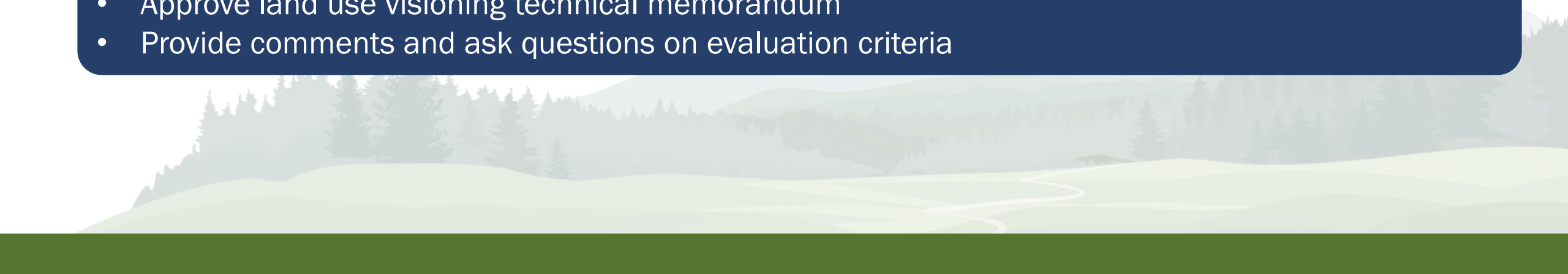
Likely Cooperating and Likely Participating Agencies

Technical Committee and Agency Roles

- PEL is a collaborative decision-making **planning** process
- Goal to reduce the number of alternatives and identify potential impacts that will be looked at further during NEPA
- **Recommendations** only – **not binding** until NEPA process

Today's ask:

- Approve land use visioning technical memorandum
- Provide comments and ask questions on evaluation criteria



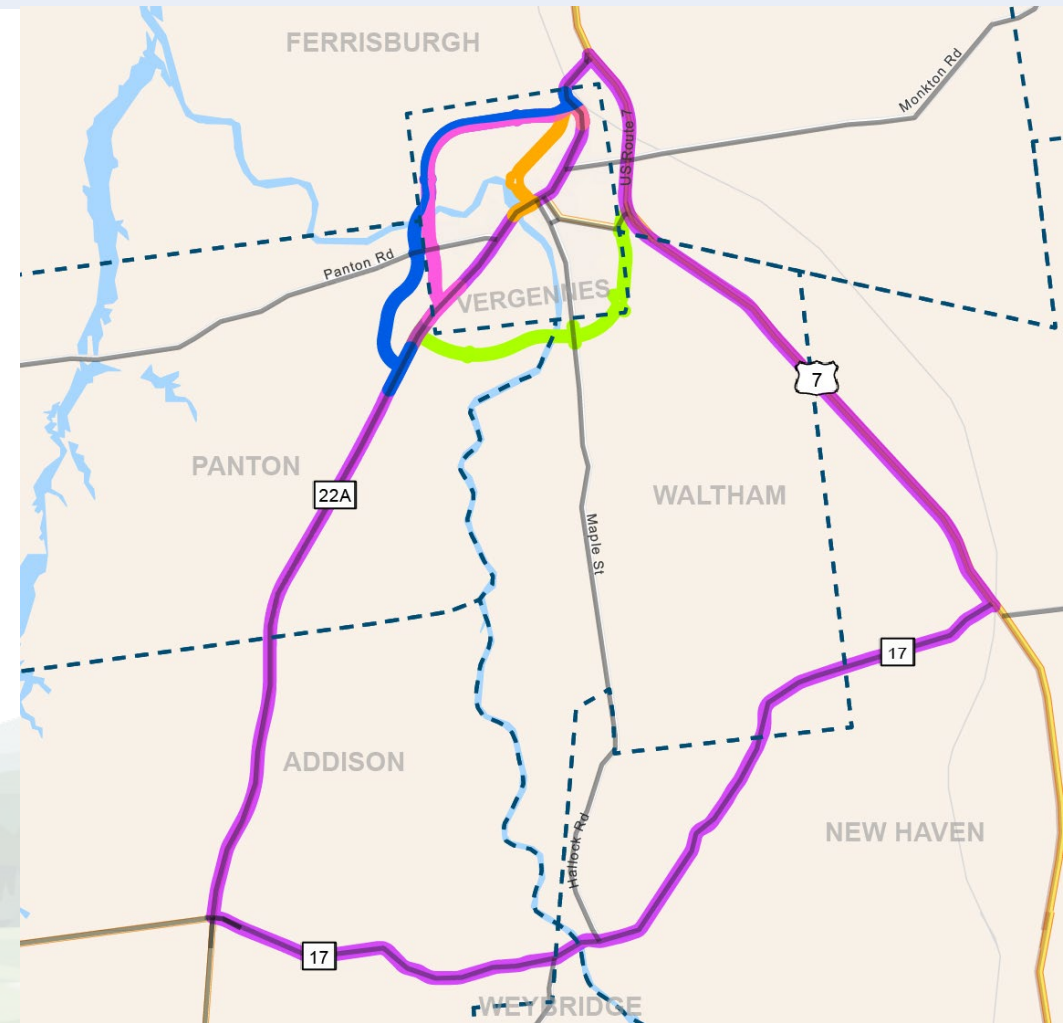


Land Use Visioning

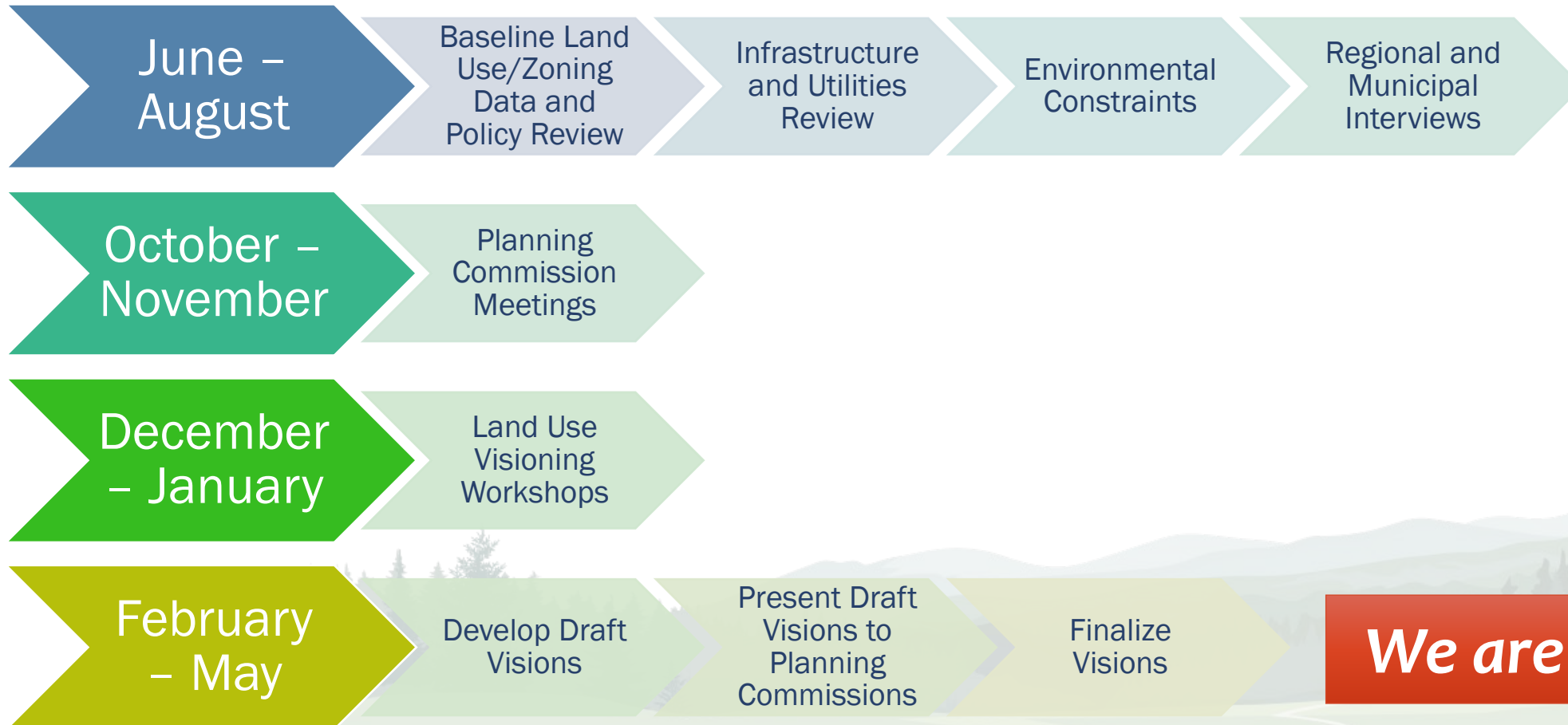


Transportation Solutions Being Studied

- 4 new roadways
- 1 concept to improve an existing roadway, Route 17
- A "No Build" option that would maintain Route 22A in its existing configuration
- All routes have strengths, weaknesses, and opportunities

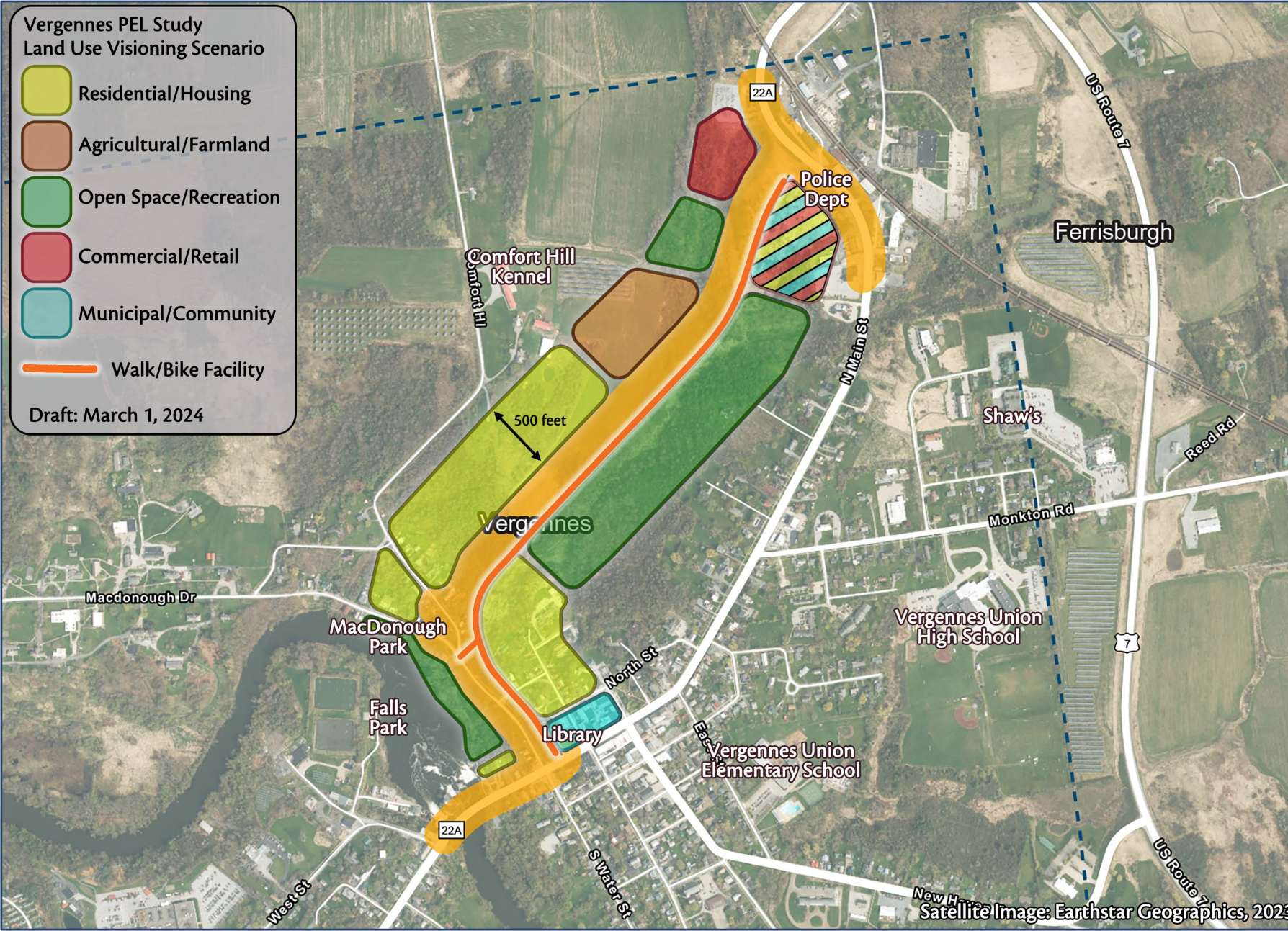


Transportation / Land Use Integration



Land Use Scenario Example

This Land Use Visioning Scenario is intended for discussion purposes and does not imply or authorize changes in property ownership or other legal consideration.



Consensus Point (for Technical Committee)

- ***Consensus point:*** Based on your review of the Land Use Visioning Technical Memorandum, do you recommend the land use visioning scenarios for approval by the Policy Committee
- Additional comments due by **June 19**
- ***Note:*** The consultant team will touch base with the Technical Committee if there are any notable changes because of the Policy Committee meeting. They will ask committee members to confirm they are still okay with their recommendation.

Technical Committee Members (for reference)

- **Chair:** Matthew Arancio, VTrans
- John Bull, Town of Ferrisburgh
- Alysha Kane, VTrans
- Shannon Haggett, City of Vergennes
- Fred Kenney, Addison County Economic Development
- Jim Larrow, City of Vergennes
- Bruce Martin, VTrans
- Joel Perrigo, VTrans
- Katie Raycroft-Meyer, ACRPC
- Jeff Ramsey, VTrans
- Mike Winslow, ACRPC



Evaluation Criteria and Metrics



Evaluation Criteria – Mobility and Access, Safety and Traffic Circulation

Resource	Measure
Traffic Volume	Change in truck volumes on Main Street
Existing routes within the study area	Notable traffic operations degradation
	Change in travel times along Main Street
Proposed route	Change in travel times for freight vehicles
	Diversion length
Traffic infrastructure	# of signalized intersections
	# of unsignalized intersections
	# of bridges
Bicycle and pedestrian facilities	Potential for expansion of regional bicycle network
	Linear feet of new sidewalk
	Number of additional marked crosswalks

Traffic

Review of existing and future traffic and turning movement volumes at key intersections for the following scenarios:

- Existing conditions
- Future 2046 No Build conditions
- Future 2046 Build – Purple Route
- Future 2046 Build – Blue Route
- Future 2046 Build – Pink Route
- Future 2046 Build – Green Route
- Future 2046 Build – Orange Route

Analysis of Level of Service to determine minimum improvements (stop control, signalization, turn lanes)

Analysis of Travel Time (NB and SB) between VT 22A/VT 17 (south) and VT 22A/US 7 (north)

Traffic

Initial review of future LOS indicates:

- Few intersections will require signalization
- Turn lanes will not be required at most intersections (signalized nor unsignalized)

Given the lack of turn lanes at most intersections, additional coordination with VTrans Traffic Engineering staff forthcoming

Travel times indicate that Route 22A will be a shorter trip (time) than all scenarios

Discussion of Individual Scenarios

Evaluation Criteria – Quality of Life, Equity

Resource	Measure
Noise	# of sensitive receptors within screening distance for new routes
	Forecasted change in traffic noise on Route 22A/Main Street based on traffic forecast
Vibration	# of sensitive receptors within screening distance
Air quality	Change in emissions
Visual	# of critical visual resources potentially impacted
	# of viewsheds potentially impacted

Resource	Measure
Environmental justice populations	Total EJ population impacted
Property impacts	Acreage of property acquisitions
	Number of full acquisitions/displacements

Evaluation Criteria – Economic Vitality, Land Use

Resource	Measure
Downtown Vergennes economy	Strongly supports, neutral support, weakly supports
	Change in sales tax revenue generated
Regional economy	Strongly supports, neutral support, weakly supports
	Change in sales tax revenue generated

Resource	Measure
Local land use plans	Vergennes Municipal Plan (2020-2028)
	Vergennes Downtown-Basin Master Plan (2016)
	Addison Town Plan (2016-2021)
	Ferrisburgh Town Plan (2017-2025)
	New Haven Town Plan (2017)

Evaluation Criteria – Environmental Impacts

Resource	Measure
Wetlands	Area within wetlands, including vernal pools Class II wetland impacts Class III wetland impacts
Surface waters (streams, rivers, lakes, ponds)	Area within surface waters and impaired waters
Floodplains	Area within floodplain
	Area within State River Corridors

Evaluation Criteria – Environmental Impacts (continued)

Resource	Measure
Significant Communities/Wildlife Habitat	Area within uncommon species areas, natural communities, deer wintering areas, significant habitats, habitat blocks
Rare, Threatened, and Endangered Species	Area within RTE areas
Farmland	Area within primary agricultural soils
Public Lands	Number of park and recreation areas
	Area of conserved and Section 6(f) lands

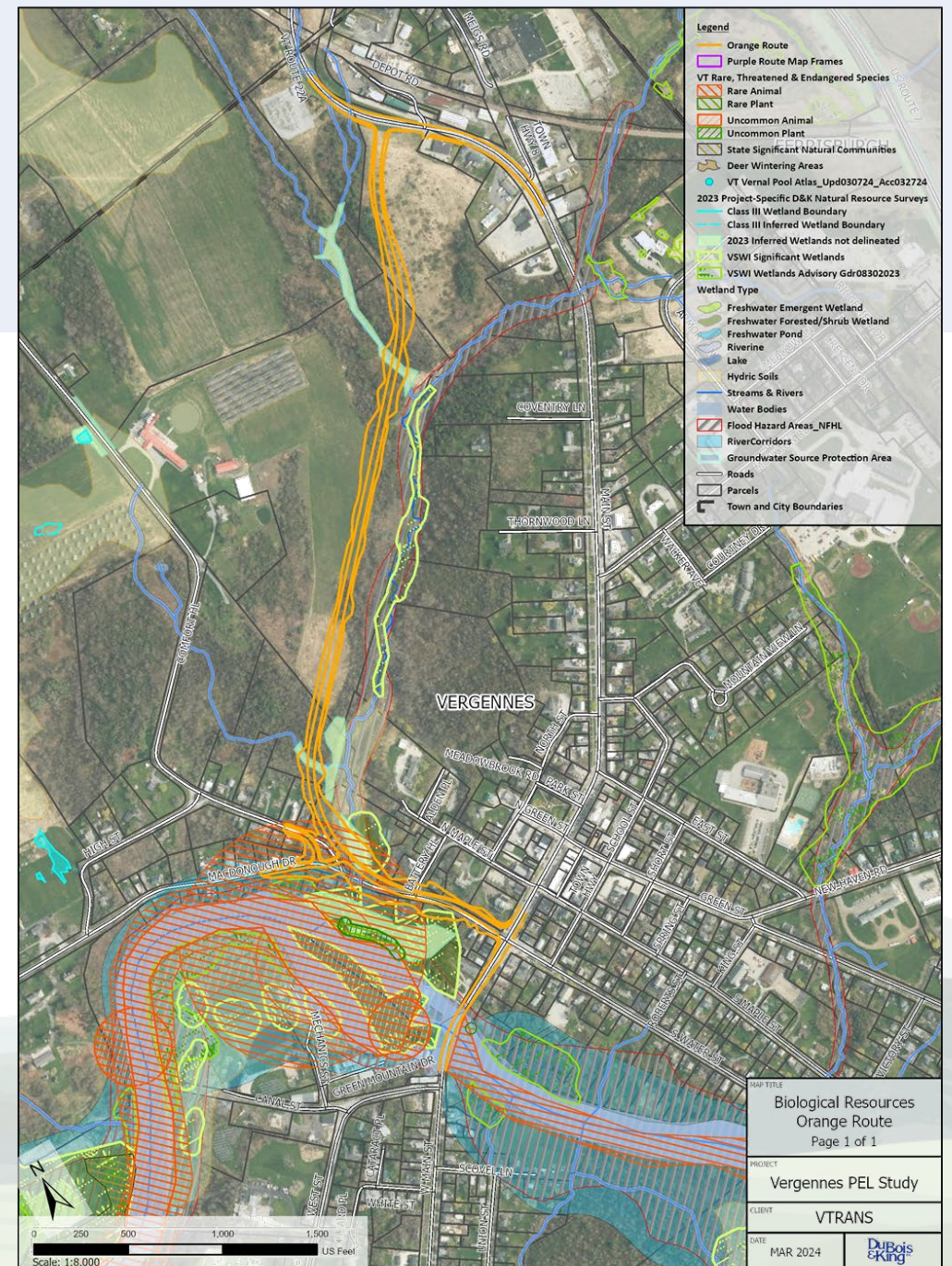
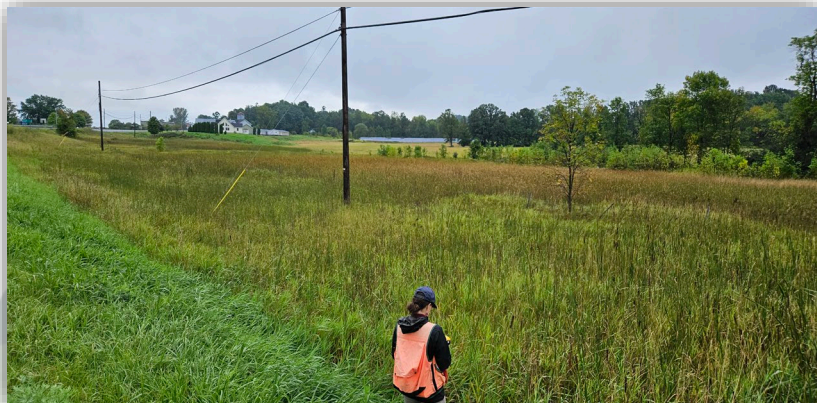
Evaluation Criteria – Environmental Impacts (continued)

Resource	Measure
Historic resources	# of known archaeological sites potentially impacted
	Area of encroachment of high archaeological sensitivity (SF)
	# of known resources eligible for or listed on NRHP impacted



Environmental Impacts Approach using the Orange Route as a Pilot

- Desktop/UAV review
- Agency coordination
- Field investigation
- Regulatory agency site visit
- ArcGIS analysis
 - Add resources based on desktop and field review
 - Quantify impacts based on route and resource overlay





Next Steps



What Comes Next?

Technical Work

Evaluation of Concepts

- Traffic impacts, multi-modal considerations
- Environmental impacts – wetlands, floodplains, habitats, noise

Final PEL Report

- Recommended alternatives
- Local land use regulations
- Funding and financing

Meetings and Outreach

2-3 Technical
Committee
Meetings

Public
Informational
Meeting

Updates and Announcements



We welcome your input and appreciate your feedback. Please visit <https://vergennespel.com/> to join our email list for Study updates

To contact the study team, email: vergennespel@gmail.com

Community Liaison, Jim Gish
jgish@vhb.com
802.497.6161

Reminder – Please send additional comments by email by June 19